



# School Newsletter

## Autumn 1 2017

[www.waterthorpeinfantschool.co.uk](http://www.waterthorpeinfantschool.co.uk)



Dear Parents/Carers,

Welcome back to a new school year. I hope everyone has had a lovely summer and enjoyed all the sunshine that the holiday brought us. The Autumn term is always a busy one with lots of exciting things happening as we move towards Christmas. The first few weeks are really important in settling the children in and teaching them the rules and routines that will help them to succeed throughout the year; please help your child by ensuring that they are in school on time every day.

Our Newsletter will be sent out half termly this year and a weekly update emailed to families with diary events and important updates. Please also regularly visit our website at [www.waterthorpeinfantschool.co.uk](http://www.waterthorpeinfantschool.co.uk) to find out about events in school. The 'News Update' tab is changed weekly.

Your comments, as always, are welcomed and I would be happy to see you at any time if you want to catch me in the playground or call in at the office to make an appointment. If you do have any concerns or worries please have a word with your child's teacher as I know that they will do their best to help and to put your mind at rest. Helen Stokes (Headteacher).

### Senior leadership team



Mrs Helen Stokes  
Headteacher



Mrs Caryn Moffatt  
Foundation Stage  
Leader



Mrs Shelly Appleby  
Key Stage 1 Leader



Mrs Michelle  
Taylor  
Special Needs

This is the **School** version of the **September Newsletter**.

F2: Red Base Y1: Blue Base Y2: Yellow and Green Base

To help you in seeing which items you may need to take action on a list is below:

**Actions:**

- If you would like any advice or support, please come to the office between 8:45a.m. and 10a.m. on 13<sup>th</sup>/27<sup>th</sup> September or 11<sup>th</sup>/25<sup>th</sup> October and we will take you to the MAST worker
- Please send any food bank items on Friday 15<sup>th</sup> September (Food Bank 'shopping list', sent out with this newsletter)
- Please call and speak to Mrs Stokes if you are in need of a food parcel or, if you wish you can self-refer by going to the S20 Information Station on a Monday between 1p.m. and 3p.m.
- Please join us on 20<sup>th</sup> September for the SEAL Family workshop and return the SEAL workshop reply slip at the end of the newsletter
- Parents of children in Blue, Yellow and Green Base: Please join us for our Open Evening at 5:30p.m. on Wednesday 27<sup>th</sup> September (Please complete the slip at the end of the newsletter to book any crèche places for your children.)
- Please join us on Friday 29<sup>th</sup> September at 9a.m. in the school hall for our Macmillan Coffee morning
- Please send donations of cakes, buns and biscuits for our coffee morning on Friday 29<sup>th</sup> September (Send into school on Thursday 28<sup>th</sup> please)
- Parents of children in Yellow and Green Bases: Please attend Open Evening in Emmanuel on Wednesday 4<sup>th</sup> October at 5:15p.m. to learn more in preparation for making a Junior School application later this term.
- Please bring any brothers or sisters, who are not in our school, to the hall at 8:15a.m. on the 5<sup>th</sup> October to be photographed with your child
- Please fill in the slip to let us know if you would like your child to be photographed with a sister or brother in Emmanuel on 5<sup>th</sup> October
- Please return the slip on the letter at the end of the newsletter to book a place at the English Family workshop on 24<sup>th</sup> October at 9:15a.m.
- Please join us for your child's class assembly
- Please try to walk, run, cycle, scoot or use any other 'active' means of coming to school between 16<sup>th</sup> and 27<sup>th</sup> October
- Please ensure that children do not ride bikes or scooters in the playground
- Please complete and return the pantomime trip letter with payment by 20<sup>th</sup> October
- Please ask for a payment book at the office if you wish to pay by installments
- Please ensure that children arrive on time each day
- Please contact school if your child is going to be absent or late
- Please try to say goodbye to children at the classroom door and let them come into school independently
- Please return the slip at the end of this newsletter if you are interested in any of the volunteering opportunities offered
- Please collect a form from the office to register your child for Nursery
- Please pay £12.75 for milk in the autumn term (cheques should be made out to SCC)
- Please put payments for Nursery, school or Kids' Club in labelled envelopes to give to the office or put in office postbox
- Please note clubs start 11<sup>th</sup> September and please pay the term's fee for clubs at the office

- If you have not yet booked your child into a club, please complete the form attached to the newsletter (Blue/Yellow/Green Base children only)
- Please ensure that all children in Blue, Yellow and Green Bases have a PE kit and pumps in school
- Please donate to school any outgrown uniform or PE kit
- Please remove earrings on PE days (or teach your child how to do it)
- Please complete a Kid's Club Contract if planning to use the club
- Please complete a new booking contract if you would like to use the club on a regular basis in the school year 2017/2018
- Please book Kid's Club sessions through the school office or directly with Sue Moore
- Please put payments for Kid's Club in an envelope and put in the office post box or pay Sue at the club
- Please book Breakfast Club places at the school office (£3.50 per day)
- If you want to claim 20% of the costs of Breakfast Club and Kid's Club, then visit the Childcare Choices website at: <https://www.childcarechoices.gov.uk/>

## Items for action

### Events you are invited to this half term:

#### **First MAST Coffee Morning/drop-in 13<sup>th</sup> September**



The drop-in sessions this half term are on:

- Wednesday 13<sup>th</sup> and 27<sup>th</sup> September
- Wednesday 11<sup>th</sup> and 25<sup>th</sup> October

If you would like to book an appointment with a support worker, please call at the office and we will arrange it for you. Alternatively, Mrs Stokes can introduce you to the worker or you can go to either Waterthorpe or Emmanuel School Office and you will be taken to a worker/the coffee morning.

- If you would like any advice or support, please come to the office between 8:45a.m. and 10a.m. on 13<sup>th</sup>/27<sup>th</sup> September or 11<sup>th</sup>/25<sup>th</sup> October and we will take you to the MAST worker

#### **Food Drive Friday 15<sup>th</sup> September**

Our next Food collection for the S20 food bank is on Friday 15<sup>th</sup> September.

**The S20 Information Station** (in the old Westfield TARA building) offers a relaxed environment and it is open on Mondays 1pm to 3pm. They also have a housing officer and Citizen's Advice Worker on hand to offer support.



We are able to refer any families who would like a Food gift. Our next Food Bank collection in school is on Friday 15<sup>th</sup> September. Children are asked to bring food gifts into Merit assembly where they will be collected ready to send to the Food Bank.

- Please send any food bank items on Friday 15<sup>th</sup> September (Food Bank 'shopping list', sent out with this newsletter)
- Please call and speak to Mrs Stokes if you are in need of a food parcel or, if you wish you can self-refer by going to the S20 Information Station on a Monday between 1p.m. and 3p.m.

## SEAL Family Workshop 20<sup>th</sup> September



Our next SEAL workshop is on Wednesday 20<sup>th</sup> September in the school hall between 9:15a.m. and 10a.m. At the workshop you will work with your child on the theme of 'New Beginnings'. Brothers and sisters from Emmanuel can be brought through to join us for this workshop. This first workshop is only open to families and children in Year 1 and Year 2 (Blue, Yellow and Green Base).

### Feedback from our 'New Beginnings' workshop in Sept 16:

- "Me and my children like the workshops very much, we always have a great time. .... told me that the workshops are "the best time" in the school."
  - "We both enjoyed spending time thinking about our family and what it means to us."
  - "We enjoyed doing the activities together and especially the 'coat of arms'. Also learning how many jobs we all do."
  - "We enjoyed making the shields."
  - "Enjoyed spending time with my children. Realising they actually help a lot."
  - "The SEAL workshop was really helpful and fun. It was interesting to do a family shield and work together."
  - "Children really enjoyed the activities. Thank you for doing SEAL as it's really lovely to work with the children."
  - "Really enjoyed spending time and talking about what is important to our family, also giving more responsibility to my son to do more jobs at home with some help. Thanks again a fantastic SEAL workshop."
  - "We all really enjoyed the workshop. Both my children enjoyed decorating their shields."
  - "The children thoroughly enjoyed the session. Family shield activity was their favourite."
- Please join us on 20<sup>th</sup> September for the SEAL Family workshop and return the SEAL workshop reply slip at the end of the newsletter

### Open Evening for parents of children in Y1 and Y2 (Blue, Yellow and Green Bases) Wednesday 27<sup>th</sup> September 5:30p.m



We are holding an Open Evening for families of children in Y1 (Blue Base) and Y2 (Yellow and Green Base). **This is a very important meeting** where you will be able to find the answers to the many questions that we get asked during the year, such as:

- What homework will my child get this year?
- What are the words that they have to learn to spell?
- How can I help my child to do their best?
- What tests will my child have to take at the end of the year?
- What is my child expected to have learnt by the end of this year?

This is also a good opportunity to meet the adults who will be working with your child. The meeting will last about 30 minutes and there will be an opportunity for you to talk individually to the teacher at the end if you wish.

The meeting for Year One parents will be held in Blue Base.  
The meeting for Year Two parents will be held in Yellow Base.

There will also be a demonstration, in Green Base, of our Easimaths electronic maths programme, which your child will be able to access at home. (You will need to come along and request a password for this.) Children do not need to attend this meeting. If you do not have any childcare we are able to look after some children in Red Base whilst you attend the meeting. Please bring them to Red Base at 5:25p.m.

*Please come along, as this is one of the most important meetings of the year and families really do need to know what is expected of your child this year.*

- Parents of children in Blue, Yellow and Green Base: Please join us for our Open Evening at 5:30p.m. on Wednesday 27<sup>th</sup> September (Please complete the slip at the end of the newsletter to book any crèche places for your children.)

### Macmillan Coffee Morning Friday 29<sup>th</sup> September 9a.m.

On Friday 29<sup>th</sup> September we are holding a coffee morning to raise funds for Macmillan Nurses as part of the Macmillan World's Biggest Coffee Morning event.

This will be in the school hall from 9a.m. There will be no merit assembly on 29<sup>th</sup> so why not come along to our coffee morning instead?



- Please join us on Friday 29<sup>th</sup> September at 9a.m. in the school hall for our Macmillan Coffee morning
- Please send donations of cakes, buns and biscuits for our coffee morning on Friday 29<sup>th</sup> September (Send into school on Thursday 28<sup>th</sup> please)

### Emmanuel Open Evening Wednesday 4<sup>th</sup> October 5:15p.m.: For parents of children in Yellow and Green Bases (Year 2)

This half term parents and carers of children in Y2 will receive an application pack for the Junior School. In this you will be asked to apply for the Junior School that you would like your child to attend. Emmanuel Junior Academy is the school that most of our children move onto. They are holding an Open Evening on Wednesday 4<sup>th</sup> October at 5:15p.m. where you can find out more about the school before completing your application.

- Parents of children in Yellow and Green Bases: Please attend Open Evening in Emmanuel on Wednesday 4<sup>th</sup> October at 5:15p.m. to learn more in preparation for making a Junior School application later this term.

### School photos 5<sup>th</sup> October

Individual and family group photos will be taken on 5<sup>th</sup> October. If you would like a photo taken with younger/older brothers & sisters please arrive in the Infant school hall at 8:15 a.m. If you would like your child to be photographed with their





brother/sister in Waterthorpe or Emmanuel, and are not able to come before school, please complete the slip at the end of the newsletter so that we can arrange this. Thank you.

Children who do not attend nursery on photograph day are still welcome to come in for their photograph taken but will be unable to stay for the nursery session. Please ask Miss Bryce, in the Nursery, for arrangements.

Afternoon children will have their photographs taken in the nursery at the start of the session. Younger brothers/sisters may be included if you wish to stay. For other family group photos please come to the school hall at 8:15a.m.

- Please bring any brothers or sisters, who are not in our school, to the hall at 8:15a.m. on the 5<sup>th</sup> October to be photographed with your child
- Please fill in the slip to let us know if you would like your child to be photographed with a sister or brother in Emmanuel on 5<sup>th</sup> October

### English Family Workshop Tuesday 24<sup>th</sup> October (Please note change of date)

Please join us for our English Family Workshop in the school hall. This workshop is for families of children in school (Red, Blue, Yellow and Green bases).



The focus of our workshop will be **reading**, as this is a key priority for the school. You will be able to take part in some fun activities with your child. You are welcome to bring younger brothers and sisters.

*(Please note that the School Council Conference at Rothervalley is also, unavoidably, on this date. Therefore if your child is in the School Council they will not be available to attend the English Workshop.)*

- Please return the slip on the letter at the end of the newsletter to book a place at the English Family workshop on 24<sup>th</sup> October at 9:15a.m.

### Class Assemblies

Each class holds a termly assembly for parents and families. These are in the school hall and start at approximately 9:15a.m. They usually last about 20 minutes. At these assemblies, the children share some of the things that they have been learning in school. The dates of the class assemblies this term are:

- |               |                           |                                    |
|---------------|---------------------------|------------------------------------|
| • Green Base  | Miss Wilson               | Thursday 12 <sup>th</sup> October  |
| • Blue Base   | Mrs Appleby/Mrs Taylor    | Thursday 19 <sup>th</sup> October  |
| • Yellow Base | Mrs Haywood               | Thursday 16 <sup>th</sup> November |
| • Blue Base   | Miss Brooks               | Thursday 23 <sup>rd</sup> November |
| • Red Base    | Mrs Moffatt/Miss Baggaley | Thursday 14 <sup>th</sup> December |

- Please join us for your child's class assembly

## 10 day Active Travel Challenge 16<sup>th</sup> to 27<sup>th</sup> October

Our school will be taking part in Sheffield City Council's 10 Day Active Travel Challenge starting on **Monday 16<sup>th</sup> October** and finishing on **Friday 27<sup>th</sup> October 2017**.

The challenge is for pupils & their families to choose an **active way** of getting to school over the 10-day period.

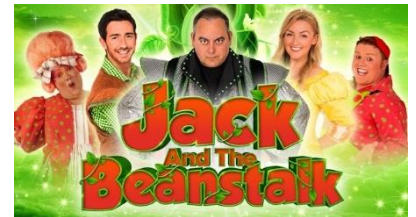


During the challenge each classroom will have a wall chart on which pupils who have travelled actively will record their journey by adding a special sticker to the chart. Those pupils with between 8 and 10 stickers on the chart at the end of the 10-day challenge will be awarded a footprint enamel badge.

- Please try to walk, run, cycle, scoot or use any other 'active' means of coming to school between 16<sup>th</sup> and 27<sup>th</sup> October
- Please ensure that children do not ride bikes or scooters in the playground

## Christmas Pantomime ~ Jack and The Beanstalk 1<sup>st</sup> December

We have booked to take all the children to the pantomime in Rotherham in December. This will link with work that we will be doing in school and is a great opportunity for children to experience live theatre in the company of other children. The cost of this trip is £13.50. A trip letter is attached.



- Please complete and return the pantomime trip letter with payment by 20<sup>th</sup> October
- Please ask for a payment book at the office if you wish to pay by installments

## Attendance

Good attendance is very important in ensuring children have the best chance of a good education. Where attendance is below 90% the government class this as 'persistent absence' and parents may be liable for fines. Arriving at school on time is just as important as children miss valuable learning and often feel anxious when they arrive late to school.



We will continue to monitor attendance and punctuality each week and will contact families if we have a concern that attendance may drop below 90% or, if children do not arrive in school on time.

- Please ensure that children arrive on time each day
- Please contact school if your child is going to be absent or late

## Settling children into class in the mornings

After the first week in their new classes we now hope that the children will be able to say goodbye to their parents at the door and come into class on their own. We are working on independence skills this term and our first target with the children is for them to come into school on their own. The cloakroom and classroom, particularly in Blue Base, gets very congested in the mornings and it would be much calmer for the children if it wasn't so overcrowded with adults. We understand that you may wish to pass on some



information to the teacher so please feel free to do this or catch them at the end of the day when they are not so busy.

- Please try to say goodbye to children at the classroom door and let them come into school independently

### Volunteers required



We have lots of opportunities for parents and other adults who would like to volunteer in school. Many of our previous volunteers have gone onto child care training or employment and some are now employed by us. Our volunteers enable us to provide a much richer curriculum for the children and all our children really love to see other adults in school. All volunteers will have a criminal records check completed.

If you would like to volunteer we are particularly in need of the following:

- Reading Volunteers: Reading with a couple of children individually once or twice a week
  - Kerb Craft Volunteers: Helping to teach children about road safety. These sessions are held on local streets with Y2 children on Friday afternoons between 1:45p.m. and 2:15p.m. A training session is held each term for volunteers. We desperately need volunteers!
  - Gardening: Volunteers wanted to work with small groups of children on basic gardening or to just help with some weeding and gardening
  - Cooking: Volunteers welcome to help with our healthy cooking club on Friday afternoons.
  - General volunteers to help around school, in classrooms or the office on a regular basis.
- Please return the slip at the end of this newsletter if you are interested in any of the volunteering opportunities offered

### Registering for Nursery



We have a simple form for parents to fill in to register children for our Nursery. Please do this early, however old your baby or toddler is now, as it allows us to plan for future places if we know how many children to expect in the future.

- Please collect a form from the office to register your child for Nursery

### Milk for Autumn term 2017



The cost of milk for the next term, commencing 5<sup>th</sup> September to 22<sup>nd</sup> December, is £12.75. Please pay this at the school office as soon as possible. Please put money into a clearly marked envelope. Cheques should be made payable to Sheffield City Council (SCC). You will be sent a receipt.

Free milk will continue to be provided to all children under the age of five or to those children who are in receipt of income based free School Meals/FSM.

- Please pay £12.75 for milk in the autumn term (cheques should be made out to SCC)



## Payments

Later this term we will be moving to electronic payments only. This means that you will be able to make payments by debit or credit card. We will be sending further information once this facility has been set up.



### **Payments this term:**

Payments for Kid's Club may be put in the office collection box or paid directly to Sue Moore.

All payments should be put in an envelope and placed in the black post box just inside the main entrance. We will give out or send receipts for all payments.

- Please put payments for Nursery, school or Kids' Club in labelled envelopes to give to the office or put in office postbox

## Club News

Clubs will start in the week beginning 11<sup>th</sup> September. A letter for you to complete and return to school was sent out to children in Y1 and Y2 last term and places have been allocated. We do have some spaces if you have not yet returned your letter. (A copy is attached.) Children should be collected from the hall doors at 4:10p.m. after clubs. Most clubs are £1 per week and the fees for the half term should be paid at the office. Karate is £15 for the half term and this fee should be paid to the coach when you collect your child. Thank you.



Children should bring a PE kit for any sports type clubs.

The new clubs are:

- Monday Drama
- Tuesday Sport
- Thursday Dance
- Friday Karate

- Please note clubs start 11<sup>th</sup> September and please pay the term's fee for clubs at the office
- If you have not yet booked your child into a club, please complete the form attached to the newsletter (Blue/Yellow/Green Base children only)

## PE kit/pumps/ pierced ears

All children in Year One and Year Two (Blue/Yellow/Green Bases) must bring a pair of pumps or 'non-scuff sole' trainers and a PE kit (shorts/t-shirt or leotard) for PE. Children will not be able to do PE if they do not have suitable kit and footwear.



Please can children leave their PE kits in school and just take them home occasionally for a wash (half termly perhaps). Children may do physical activity, where kits are required, at any point during the week.

If you wish to donate your child's old uniform or PE pumps/kit, we would be very grateful to use these as spares for other children. These can be handed into the office or class teacher.

**Children with long hair must have it tied up for PE.** Children must remove earrings for PE and we are not allowed to do this for them or to tape ears. On your child's PE days please remove earrings, unless your child is able to do it themselves before the lesson starts. As we have many different activities going on throughout the term/week it would be really helpful for children to learn to remove their own earrings.

Children are only permitted to wear stud earrings in school. No other jewellery is permitted.

Children in Blue, Yellow and Green bases do PE several times a week and many attend a club after school. This means that they have to get changed and make sure that their clothes are kept together and put away properly so that they don't lose them. Many children are finding this difficult and they get upset when they can't do it. Please help your child by encouraging them to get dressed and undressed themselves and to fold up their clothes and put them in a neat pile when they take them off. It is also very helpful to make sure that your child's name is in their clothing so that they can make sure they put on the right uniform when they get dressed after PE.

- Please ensure that all children in Blue, Yellow and Green Bases have a PE kit and pumps in school
- Please donate to school any outgrown uniform or PE kit
- Please remove earrings on PE days (or teach your child how to do it)

#### **Kid's Club (Ofsted Number for use with Tax credits: 300838)**

We are maintaining the current prices for Kid's Club until April 2018. Prices will then rise by 50p per session.

A list of activities and dates of when things are happening in Kid's Club is attached. Please take a look and see if there is any day that you child might like to attend.

Please note that the school office no longer take payments for Kid's Club You must either pay Sue Moore at Kid's club or put your money in a clearly labelled envelope in the post box just inside the Infant School entrance. Sue will check the box each morning. A receipt may be collected from Sue at the club.

It is important that you make your booking at the school office or directly with Sue.

If you would like to book places for Kid's Club after-school childcare for the autumn term:

- All new parents must sign an agreement
  - A booking contract is available to commit to a certain number of sessions per week/per month
  - For bookings on a booking contract the fee per session will be £8.50
  - For occasional bookings without a contract the fee per session will be £9
  - Bookings must be paid for 7 days in advance or when making the booking (If an emergency booking is made, on the day of the booking, payment must be made on collection of your child)
  - In order for a refund to be received, for cancelled bookings, 7 days' notice must be given
  - If children are ill and miss their session, half the fee is still payable
- Please complete a Kid's Club Contract if planning to use the club

- Please complete a new booking contract if you would like to use the club on a regular basis in the school year 2017/2018
- Please book Kid's Club sessions through the school office or directly with Sue Moore
- Please put payments for Kid's Club in an envelope and put in the office post box or pay Sue at the club

### **Breakfast Club**

All children attending Waterthorpe Nursery Infant School are welcome to attend Waterthorpe Breakfast Club. You can book places on a day to day or a weekly basis. We are open every day from 7:55a.m. Children can be brought at any time after this. Places do fill up quickly on some days so it may be advisable to have a regular booking if you are a working parent.

At the club, the children are given a healthy breakfast of their choice. For example this may be cereals, toast and juice. There is also fresh fruit, milk and water available. The school meals service provides the food from the kitchens in the Junior School. The children also have a play session in the Infant School hall.

The cost of a session is £3.50 payable in advance. This includes a healthy breakfast. If you give 24 hours notice of cancellation you will receive a refund on your child's place. If your child is ill we will also give a refund on their place.

- Please book Breakfast Club places at the school office (£3.50 per day)


### **Support for funding Breakfast Club and Kid's Club places**

The government have introduced changes to Tax Free Childcare. One of the key change is the introduction of 20% of childcare costs being paid by the government. There are certain criteria to be met. Information about this scheme is on the childcare choices website. Parents can currently select to remain in the old childcare voucher schemes instead, so you will need to look at what is best for you.

- If you want to claim 20% of the costs of Breakfast Club and Kid's Club, then visit the Childcare Choices website at: <https://www.childcarechoices.gov.uk/>

## **Items for information:**

### **Twitter**

We now have a school Twitter account! Photos and videos of activities are already being tweeted. Take a look at our video of Y2H Irish dancing. Our 'Twitter handle' is @waterthorpeNI  If you don't currently have a Twitter Account you can sign up to one on your phone or tablet through the App store or by visiting Twitter.com. Just follow us to get live feed as photos are added. The Twitter Feed is being put on our website homepage so please visit <http://www.waterthorpeinfantschool.co.uk/>

To see the latest news and photos.

## 2017-18 Short Grant Programme

The Short Break Grant Programme provides a one off payment, up to a maximum of £400 per family, to help parents/carers of disabled children and young people to have a short break from their caring responsibilities (e.g. gym membership; day trips; contribution to a holiday; cinema tickets, etc.). The break is intended for parent carers who need support to be able to continue to care for their child or young person at home, as well as allow them to do so more effectively.

Applications are accepted from parents or carers who have a disabled child aged 0-19, where the parent/carer is a resident of Sheffield and where Sheffield City Council has a responsibility for the child/young person (e.g. education).

If you are a parent or carer of a disabled child or young person, you are now able to apply for a Short Break Grant for the year 2017-18.

### **Receiving a Short Break Grant**

If you received a grant last year you will automatically receive an application form over the next few days. If you have not received a grant last year please download an application form from our website (link below). Please ensure you read the guidance notes before filling in the form.

<http://www.waterthorpeinfantschool.co.uk/special-educational-needs-and-disabilities-send/>

**Applications will be accepted until 31 December 2017, and all money must be spent on activities or short breaks which are taken by 31 March 2018.**

All applications are processed in strict date order of when they are received. They are unable to 'fast track' any applications. Please allow at least 6 weeks for your application to be processed.

If you have want more information, please see the Guidance Notes or contact Sheffield SEN & Disability Information, Advice & Support on 0114 273 6009.

### **School Meals**

School meals continue to be **free** to children in Infant Schools under the Universal Infant meals scheme. The price of a dinner for Nursery children is £1.75 per day. We are continuing with the current menu and next week we will be on Week 2. A copy of the menu is available on the website at [www.waterthorpeinfantschool.co.uk](http://www.waterthorpeinfantschool.co.uk).



### **Takeback Ltd for Schools**

We are registered with a recycling scheme to promote and encourage the recycling of used mobile phones, laser toner and inkjet cartridges. Please help us to promote recycling and also raise money for our school by bringing in any of the above used items. A box will be available in our reception for you to put your empty cartridges.

## Attendance

The parents of any child who had attendance below 90% last year will have received a letter about persistent absence. We understand that there may have been a very good reason for their absence but we are required by the government to monitor all children with attendance that may drop below 90% and we wanted you to know if your child was in this group. Where attendance is below 90% the government identifies this as 'persistent absence' and we are not able to authorise any absence without medical evidence e.g. a prescription for medicine from your GP.

Each half term we look at each child's attendance and decide whether to monitor it, send a letter to parents, invite parents for a meeting, refer to the Attendance Officer or send the child a letter of praise. An Attendance Officer regularly visits school and looks at attendance, advising us on the next steps to take where attendance is a concern. Where a child has a genuine reason for absence no further steps would be taken.

Holiday fines will continue to be issued for holidays of 5 days or more where your child is over 5 years old.

We regularly reward children for good attendance.

## Assembly reminders



Parents/carers and family members are welcome to join us for our merit and birthday assemblies on Friday mornings at 9:10a.m. During these assemblies we celebrate children's birthdays and they have the opportunity to bring one of their presents to share with us and to blow out the candles on our birthday cake.

We also give out awards for good work and behaviour, reading certificates and bookmarks for children who have read frequently at home, dinnerladies awards, Playtime Friend award, Mrs Abbey Award for good Manners/thoughtful behaviour and 'Star of the Week' awards to children in each class. If children have received a certificate or award for activities out of school they are invited to bring them in to share in assembly. We believe in a positive reward system for good behaviour and our merit assemblies are an important part of this. We hope that you will be able to join us during the year.

There are occasions when we are unable to hold these assemblies on Fridays due to other commitments. (Please see attached diary.)

Family and friends are welcome to our assemblies but please take out younger children if they start to make a noise as this can be distracting for the performers and spoil the enjoyment of others. Please note we may ask parents to take out younger children who are causing a distraction. Thankyou.

## Parentmail

We are upgrading our Parentmail account to Parentmail PMX. This will give us added facilities and improve our communications to you. A letter, giving further information is attached to this newsletter. Within the next 2 weeks you should receive an email or text from Parentmail. It is really important that you register with the new Parentmail to ensure that you get the newsletter, the weekly update and all the other important messages we may send you.



## Waterthorpe Behaviour Plan

Our Behaviour Plan and rules are attached. We hope that this is helpful in understanding how we promote good behaviour in school.

One thing that some children find difficult is where they are allowed to do certain things in the playground before and after school that are not allowed at playtimes e.g. climbing on the bike pods or going up the banking into the trees. We have these rules in school to ensure that all children are kept safe during the school day. Please help your child by looking at the playground rules with them and making sure they keep to them before and after school in the playground. Thank you.

### Sports Update:

This term the children in Key Stage 1 (Blue, Yellow and Green bases) will be working with a coach, Simon Dungworth, on Tuesdays each week to develop their co-ordination and games skills. Simon will also be running the after-school sports club.



'STANDING' NEWS ITEMS (These are things that are included in every newsletter for your reference)

### Attached to this Newsletter:

- Diary Dates and school holidays
- Open Evening Crèche booking form
- Volunteer form
- English Family Workshop letter
- SEAL Workshop letter
- Jack and The Beanstalk Letter
- After-school clubs letter
- Kid's Club Activities
- Parentmail letter
- Behaviour Plan

## Diary Dates 2017 ~ 2018

For a colour-coded grid version of our diary dates please visit our website:

<http://www.waterthorpeinfantschool.co.uk/calendar/>

- September 4<sup>th</sup> INSET Day ~ School closed to children  
5<sup>th</sup> Return to school  
7<sup>th</sup> New Parent's Meeting in hall  
8<sup>th</sup> First Merit & Birthday Assembly

### RED BASE Hours for New children:

- 8<sup>th</sup> 9am-12 noon  
11<sup>th</sup> 9am-12 noon  
12<sup>th</sup> 9am-12 noon  
13<sup>th</sup> 9am-12 noon  
14<sup>th</sup> 9am-1:15pm (to include school lunch)  
15<sup>th</sup> 9am-1:15pm  
18<sup>th</sup> 9am-1:15pm  
19<sup>th</sup> 9am-1:15pm  
20<sup>th</sup> 9a.m. to 3:10p.m. (Full time from today)
- 11<sup>th</sup> After-school clubs start this week  
13<sup>th</sup> MAST Drop-in 9a.m. to 10a.m. in Emmanuel  
15<sup>th</sup> Food Drive Friday  
20<sup>th</sup> SEAL Family workshop New Beginnings theme 9:15a.m. to 10:15a.m. (KS1 only: Blue, Yellow and Green Bases only)  
27<sup>th</sup> MAST Drop-in 9a.m. to 10a.m. in Emmanuel  
27<sup>th</sup> 5:30p.m. to 6:30p.m. Key Stage 1 Open Evening (Blue, Yellow & Green Base)  
29<sup>th</sup> Macmillan Coffee Morning 9a.m. in hall: No Merit and Birthday Assembly
- October 4<sup>th</sup> 5:15p.m. Y2 parents Open Evening in Emmanuel  
5<sup>th</sup> Individual photos ~ Family photos from 8:15a.m.  
11<sup>th</sup> MAST Drop-in 9a.m. to 10a.m. in Emmanuel  
12<sup>th</sup> Green Base class assembly 9:15a.m.  
16<sup>th</sup> 10 day Active Challenge starts today  
19<sup>th</sup> Y1 AT (Mrs Appleby and Mrs Taylor) Blue Base class assembly 9:15a.m.  
24<sup>th</sup> School Council Children: Conference at Rothervalley  
24<sup>th</sup> 9:15a.m. English Family Workshop (KS1 only: Blue, Yellow and Green Bases)  
25<sup>th</sup> MAST Drop-in 9a.m. to 10a.m. in Emmanuel  
25<sup>th</sup> Harvest Festival 9:15a.m.  
26<sup>th</sup> Halloween Disco for children in school (not Nursery) 3:15p.m. to 4:30p.m.  
26<sup>th</sup> Break up for Half term at end of today  
27<sup>th</sup> INSET Day ~ School closed to children
- November 6<sup>th</sup> Return to school

|          |                  |                                                                                                                          |
|----------|------------------|--------------------------------------------------------------------------------------------------------------------------|
|          | 6 <sup>th</sup>  | 11:30a.m. to 4p.m. Y2 children at Crucible                                                                               |
|          | 15 <sup>th</sup> | Parent's Evening 3:15p.m. to 7:15p.m.                                                                                    |
|          | 16 <sup>th</sup> | Yellow Base class assembly 9:15a.m.                                                                                      |
|          | 17 <sup>th</sup> | Children in Need Day: No Merit & Birthday Assembly                                                                       |
|          | 21 <sup>st</sup> | SEAL Family workshop ~ 9:15a.m. to 10:15a.m. <i>Getting on and Falling Out</i> theme (Red, Blue, Yellow and Green Bases) |
|          | 22 <sup>nd</sup> | 9:15a.m. Red Base Family Workshop                                                                                        |
|          | 23 <sup>rd</sup> | Y1B (Miss Brooks) Blue Base class assembly 9:15a.m.                                                                      |
|          | 29 <sup>th</sup> | Computing Family Workshop 2p.m. (Red, Blue, Yellow and Green Bases)                                                      |
| December | 1 <sup>st</sup>  | Pantomime ~ Jack and the Beanstalk<br>No Merit and Birthday Assembly                                                     |
|          | 6 <sup>th</sup>  | Arts/Festivals Family Workshop 5p.m. to 6p.m. (Everyone welcome)                                                         |
|          | 13 <sup>th</sup> | Christmas Dinner Day (non-uniform day: Children may wear Christmas jumpers/tops)                                         |
|          | 14 <sup>th</sup> | Red Base Christmas Assembly 10a.m. in hall (doors open at 9:45am)                                                        |
|          | 18 <sup>th</sup> | No After-School Clubs this week (Does not include Kid's Club)                                                            |
|          | 19 <sup>th</sup> | Blue, Yellow & Green Base Nativity 2p.m. in church (doors open 1:45p.m.)                                                 |
|          | 20 <sup>th</sup> | Blue, Yellow & Green Base Nativity 10a.m. in church (doors open 9:45p.m.)                                                |
|          | 21 <sup>st</sup> | Party Day and Christmas Draw                                                                                             |
|          | 21 <sup>st</sup> | 6p.m. Carol Singing at Crystal Peaks (tbc)                                                                               |
|          | 22 <sup>nd</sup> | Nursery Nativity in church 9:30a.m.                                                                                      |
|          | 22 <sup>nd</sup> | Break up for Christmas at end of today                                                                                   |
| January  | 8 <sup>th</sup>  | Return to school                                                                                                         |
|          | 12 <sup>th</sup> | Food Drive Friday                                                                                                        |
|          | 15 <sup>th</sup> | After-school clubs start this week                                                                                       |
|          | 19 <sup>th</sup> | SEAL Family workshop ~ 9:15a.m. to 10:15a.m. <i>Going for Goals</i> theme<br>No Merit and Birthday Assembly              |
| February | 1 <sup>st</sup>  | Green Base class assembly 9:15a.m.                                                                                       |
|          | 5 <sup>th</sup>  | Maths Family Workshop 2p.m. to 3p.m. (Red, Blue, Yellow and Green Bases)                                                 |
|          | 6 <sup>th</sup>  | National Safer Internet Day 2018                                                                                         |
|          | 14 <sup>th</sup> | 3:15p.m. to 4:30p.m. Valentine Disco (School children only)                                                              |
|          | 15 <sup>th</sup> | Y1 AT (Mrs Appleby and Mrs Taylor) Blue Base class assembly 9:15a.m.                                                     |
|          | 15 <sup>th</sup> | 2:30p.m. Dance Family Workshop (Blue, Yellow and Green Bases)                                                            |
|          | 15 <sup>th</sup> | Break up for half term at the end of today                                                                               |
|          | 16 <sup>th</sup> | INSET Day ~ School closed to children                                                                                    |
|          | 26 <sup>th</sup> | Return to school                                                                                                         |
|          | 28 <sup>th</sup> | 2pm Fair Trade Family Workshop (Red, Blue, Yellow and Green Bases)                                                       |
| March    | 1 <sup>st</sup>  | World Book Day: Dress-up                                                                                                 |
|          | 7 <sup>th</sup>  | SEAL Family Workshop 9:15a.m. to 10:15a.m. <i>Good to Be Me</i> theme                                                    |
|          | 8 <sup>th</sup>  | Y1B (Miss Brooks) Blue Base class assembly 9:15a.m.                                                                      |
|          | 9 <sup>th</sup>  | Science Family Workshop 9:15a.m. to 10:15a.m. (Red, Blue, Yellow and Green Bases)                                        |
|          | 15 <sup>th</sup> | Yellow Base class assembly 9:15a.m.                                                                                      |

- 22<sup>nd</sup> Red Base class assembly
- 23<sup>rd</sup> Sports Relief Day
- 26<sup>th</sup> No After-School Clubs this week (Does not include Kid's Club)
- 27<sup>th</sup> Easter Garden assembly 9:15a.m. to 10a.m.
- 27<sup>th</sup> Individual Reports to parents out today
- 28<sup>th</sup> Easter Egg Competition and Easter Draw (children only)
- 28<sup>th</sup> Parent's Evening 3:15p.m. to 7:15p.m.
- 28<sup>th</sup> Break up for Easter at the end of today
- 29<sup>th</sup> INSET DAY School closed to children
- 21<sup>st</sup> or 22<sup>nd</sup> March 4p.m. Singing Performance Y2 at Westfield School (tbc)
- April 16<sup>th</sup> Return to school: No After-School Clubs this week (Does not include Kid's Club)
- 30<sup>th</sup> Humanities (History/Geography) Family Workshop 2p.m. (Red, Blue, Yellow and Green Bases)
- May 4<sup>th</sup> Food Drive Friday
- 7<sup>th</sup> May Day Bank Holiday
- 23<sup>rd</sup> Sponsored Bounce/Obstacle Day
- 24<sup>th</sup> Class photos
- 25<sup>th</sup> Break up for Half term at end of today
- June 4<sup>th</sup> INSET DAY School closed to children
- 5<sup>th</sup> Return to school
- 14<sup>th</sup> SEAL Family Workshop 9:15a.m. to 10:15a.m. Changes theme (No Merit Assembly)
- 18<sup>th</sup> Arts Week begins
- 19<sup>th</sup> Theatre Group performance for children 9:15a.m.
- 22<sup>nd</sup> Parents informed of new classes for September
- 26<sup>th</sup> Design & Technology Family Workshop 9:15a.m. (Red, Blue, Yellow and Green Bases)
- 27<sup>th</sup> Y2 parent meeting in Emmanuel 5:15p.m. (Parents only please)
- 28<sup>th</sup> Red Base Class Assembly
- July 3<sup>rd</sup> Sports Morning 9:30a.m. to 11a.m.
- 4<sup>th</sup> Parent's Evening 3:15p.m. to 7:15p.m.
- 5<sup>th</sup> Blue Base class singing Assembly/performance 2:40p.m.
- 10<sup>th</sup> Family Picnic 4p.m. to 6p.m.
- 13<sup>th</sup> Nursery Consultation Day ~ Nursery closed to children
- 17<sup>th</sup> Children spend day in new class for September
- 16<sup>th</sup> No After-School Clubs this week (Does not include Kid's Club)
- 19<sup>th</sup> Leaver's Assembly & Y2 Attendance and Awards 9:15a.m. to 10a.m.
- 20<sup>th</sup> Attendance and Awards (not Y2) Assembly & Birthdays (to include Y2 summer holidays birthdays)
- 23<sup>rd</sup> Y2 Leavers Party Day (Fancy Dress)
- 24<sup>th</sup> Toy Day
- Break up for Summer at end of today

## School Term and Holiday Dates for 2017/18

### **Autumn Half Term 1**

Term starts Tuesday 5<sup>th</sup> September 2017 - Thursday 26<sup>th</sup> October 2017  
Half-term holiday Monday 30<sup>th</sup> October 2017 - Friday 3<sup>rd</sup> November 2017

### **Autumn Half Term 2**

Term starts Monday 6<sup>th</sup> November 2017 - Friday 22<sup>nd</sup> December 2017  
Christmas Holiday Monday 25<sup>th</sup> December 2017 - Friday 5<sup>th</sup> January 2017

### **Spring Half Term 1**

Term starts Monday 8<sup>th</sup> January 2018 - Thursday 15<sup>th</sup> February 2018  
Half-term holiday Monday 19<sup>th</sup> February 2018 - Friday 23<sup>rd</sup> February 2018

### **Spring Half Term 2**

Term starts Monday 26<sup>th</sup> February 2018 - Wednesday 28<sup>th</sup> March 2018  
Easter Holiday Friday 30<sup>th</sup> March 2018 - Friday 13<sup>th</sup> April 2018

### **Summer Half Term 1**

Term starts Monday 16<sup>th</sup> April 2018 - Friday 25<sup>th</sup> May 2018  
May Day Holiday Monday 7<sup>th</sup> May 2018  
Spring Bank Holiday Monday 28<sup>th</sup> May 2018 - Friday 1<sup>st</sup> June 2018

### **Summer Half Term 2**

Tuesday 5<sup>th</sup> June 2018 - Tuesday 24<sup>th</sup> July 2018

**Please note that the term dates above include the following INSET days:-**

Monday 4<sup>th</sup> September 2017  
Friday 27<sup>th</sup> October 2017  
Friday 16<sup>th</sup> February 2018  
Thursday 29<sup>th</sup> March 2018  
Monday 4<sup>th</sup> June 2018



**Crèche Place Booking: Open Evening Wednesday 27<sup>th</sup> September 5:30p.m.**

Please complete names and ages of children to book a place in our crèche for Open Evening.

Children's Names and Ages:

Signed (parent/carer):.....

## Volunteers

If you are interested in volunteering please complete the form below and someone will get in touch with you. A criminal convictions check will need to be completed.

Child's name and class:.....

Adult's Name:.....

Contact email:.....

Telephone:.....

Please tick the areas in which you would be interested in volunteering:

- |                                                     |                          |
|-----------------------------------------------------|--------------------------|
| Reading Volunteers                                  | <input type="checkbox"/> |
| Boys Book club volunteers                           | <input type="checkbox"/> |
| Kerb Craft Volunteers<br>(Friday afternoons)        | <input type="checkbox"/> |
| Gardening                                           | <input type="checkbox"/> |
| Cooking                                             | <input type="checkbox"/> |
| General volunteering                                | <input type="checkbox"/> |
| Administrative tasks<br>(not working with children) | <input type="checkbox"/> |

# English Family Workshop

Tuesday 24<sup>th</sup> October 9:15a.m.



Dear parents, carers and families,

Please join us for our English Family Workshop in the school hall. This workshop is for families of children in Key Stage 1 (Blue, Yellow and Green bases). Please take your children to the workshop with you.

The focus of our workshop will be **reading**, as this is a key priority for the school. You will be able to take part in some fun activities with your child. You are welcome to bring younger brothers and sisters.

You will also be given a booklet that tells you about English at Waterthorpe. The workshop will last for approximately 1 hour.

Please return the attached slip to let us know that you will be attending.

---

English Family workshop Tuesday 24<sup>th</sup> October  
9:15a.m.



Child/children's names & classes

.....  
.....

Number of **younger** children (brothers/sisters) attending the workshop with you:.....

Names of adults attending the workshop:.....

Signed: .....

# Family SEAL

## Workshop

Wednesday 20<sup>th</sup> September

9:15a.m. to 10a.m.

Dear Parents/Carers

You are invited to the family SEAL workshop on the theme of 'New beginnings' on Wednesday 20<sup>th</sup> September at 9.15am - 10am in Waterthorpe Infant School hall. During this workshop you will be able to take part in an activity with your child.

Please return the slip below to confirm your attendance.

-----  
I will be attending the family SEAL workshop on Wednesday 20<sup>th</sup> September.

Name .....

Childs/Children's Names.....

Classes .....

Number of younger children attending with you:.....

Names of children in Emmanuel who you would like to join the workshop with you:.....

**Pantomime Jack and The  
Beanstalk**  
**Friday 1<sup>st</sup> December**



This is a trip for school only (not nursery).

On Friday 1<sup>st</sup> December we will be visiting Rotherham Civic Theatre to watch the pantomime: Jack and The Beanstalk. We will leave school at 8.45am. so we will be asking children to arrive earlier than usual at 8.30 am. Please note that all staff and children in school go on this trip so we are unable to provide care for anyone who arrives late to school on the day. We also do not have places for volunteers on this trip.

We will return to school for a late lunch at about 1:30p.m. The School Meals Service are happy to provide our meals at this later time. We will provide children with a drink and a snack at the theatre in the interval.

The cost of this trip is £13.50 per child. Cheques should be made payable to 'Waterthorpe NI School.' Payments may also be made weekly using a payment card which can be collected from the school office. Please complete the slip below and return to school.



---

**Pantomime: Jack and The Beanstalk 1<sup>st</sup> December**

Child's name:..... Class:.....

I consent to my child going on this theatre trip.

I enclose the full amount of £13.50  (please tick)

I wish to pay weekly and enclose my first payment of...£.....

Signed:.....

(parent/carer with parental responsibility)



## WATERTHORPE AFTER SCHOOL CLUBS: AUTUMN TERM 2017

Clubs run after school every day except Wednesday. Clubs in the Autumn term are only open to children who will be in Year 1 and Year 2 (Blue, Yellow and Green bases) in September. Clubs start in the week beginning 11<sup>th</sup> September.

Karate Club is £15 per half term (paid directly to the karate teacher), which includes a free karate suit in the first term on joining the club. (Additional fees for competitions and gradings apply but these are optional.) Please note the change of day for karate.

We ask for £1 per week for each of the other clubs. This is to help support costs.

We ask that all clubs are paid for at the beginning of each term. (Arrangements can be made for half-termly payments). Refunds will only be given for illness or for a full week's notice that your child no longer wishes to attend the club.

Please tick the clubs that you would like your child to attend:

**Monday 11<sup>th</sup> Sept to 11<sup>th</sup> Dec** Drama (£15 for term)

**Tuesday 12<sup>th</sup> Sept~ 12<sup>th</sup> Dec** Sports Club (£15 for term)

**Thursday 14<sup>th</sup> Sept ~19<sup>th</sup> Oct (no club on 26<sup>th</sup> Oct due to disco)**  
Dance (£5 for half term)

**Thursday 9<sup>th</sup> Nov ~ 14<sup>th</sup> Dec** Film club (£6 for half term)

**Friday 15<sup>th</sup> Sept ~ 15<sup>th</sup> Dec** Karate (£15 per half term)

Child's name:..... Class:.....

My contact number between 3:10 p.m. and 4:10p.m. is: .....

Signed:.....(person with parental responsibility)

If you would like your child to attend any after school clubs please complete the application and return to school asap. **Please note that it is important to return this form even if your child currently attends a club.**

Letters will be sent out informing you if your child has a place in clubs.

**Waterthorpe Kids Club**  
**Monday to Friday 3-6pm**

**Theme: Welcome Back**

|                                     |                              |
|-------------------------------------|------------------------------|
| Monday 4 <sup>th</sup> September    | INSET DAY - Kids Club closed |
| Tuesday 5 <sup>th</sup> September   | Holiday postcards            |
| Wednesday 6 <sup>th</sup> September | Free play                    |
| Thursday 7 <sup>th</sup> September  | Outdoor play                 |
| Friday 8 <sup>th</sup> September    | Trip to the park             |

**Theme: Teamwork**

|                                      |                 |
|--------------------------------------|-----------------|
| Monday 11 <sup>th</sup> September    | Parachute games |
| Tuesday 12 <sup>th</sup> September   | Ball games      |
| Wednesday 13 <sup>th</sup> September | Den building    |
| Thursday 14 <sup>th</sup> September  | Poster painting |
| Friday 15 <sup>th</sup> September    | Outdoor play    |

**Theme: Sensory Week**

|                                      |                |
|--------------------------------------|----------------|
| Monday 18 <sup>th</sup> September    | Playdough      |
| Tuesday 19 <sup>th</sup> September   | Water          |
| Wednesday 20 <sup>th</sup> September | Sand           |
| Thursday 21 <sup>st</sup> September  | Making clothes |
| Friday 22 <sup>nd</sup> September    | Outdoor play   |

**Theme: Autumn**

|                                                                          |                             |
|--------------------------------------------------------------------------|-----------------------------|
| Monday 25 <sup>th</sup> September -<br>Friday 29 <sup>th</sup> September | Autumn display project      |
| Monday 2 <sup>nd</sup> October                                           | Forest School               |
| Tuesday 3 <sup>rd</sup> October                                          | Autumn crafts               |
| Wednesday 4 <sup>th</sup> October                                        | Autumn walk - Taking photos |
| Thursday 5 <sup>th</sup> October                                         | Trip to the park            |
| Friday 6 <sup>th</sup> October                                           | Baking bread                |

**Theme: Children's Choice**

|                                                                     |           |
|---------------------------------------------------------------------|-----------|
| Monday 9 <sup>th</sup> October -<br>Friday 13 <sup>th</sup> October | Free play |
|---------------------------------------------------------------------|-----------|

**Theme: Music and Movement**

|                                    |                            |
|------------------------------------|----------------------------|
| Monday 16 <sup>th</sup> October    | Keyboard                   |
| Tuesday 17 <sup>th</sup> October   | Percussion instruments     |
| Wednesday 18 <sup>th</sup> October | Junk modelling instruments |
| Thursday 19 <sup>th</sup> October  | Outdoor play               |
| Friday 20 <sup>th</sup> October    | Musical games              |

**Theme: Halloween**

|                                    |                              |
|------------------------------------|------------------------------|
| Monday 23 <sup>rd</sup> October    | Halloween crafts             |
| Tuesday 24 <sup>th</sup> October   | Treat night                  |
| Wednesday 25 <sup>th</sup> October | Outdoor play                 |
| Thursday 26 <sup>th</sup> October  | Film night                   |
| Friday 27 <sup>th</sup> October    | INSET DAY - Kids Club closed |

**We hope you have a lovely half term holiday and we'll see you on Monday 6<sup>th</sup> November.**

Waterthorpe Nursery Infant School  
Thorpe Drive,  
Waterthorpe,  
Sheffield.  
S20 7JU

Tel: (0114) 2484943

FAX: (0114) 2511846

e.mail: [enquiries@waterthorpe.sheffield.sch.uk](mailto:enquiries@waterthorpe.sheffield.sch.uk)

Website: [www.waterthorpeinfantschool.co.uk](http://www.waterthorpeinfantschool.co.uk)

Headteacher: Mrs H. Stokes  
Chair of governors: Mrs C.Knott  
8<sup>th</sup> September 2017



### Improving School Communications with ParentMail

Dear parent/carer,

From 15<sup>th</sup> September we will be upgrading to PMX - ParentMail's latest platform.

The benefits to this are that we now have more applications to use, as well as a free mobile App for you to pick up school communications on the go!

PMX will be beneficial to you because you can:

- Use a free mobile app on Android and iOS to pick up school messages instantly.
- Have an account simply for school messages (away from your busy email inbox!)
- Connect to other schools, nurseries or clubs that use ParentMail.
- Highlight important messages or archive old messages to make life easier.
- Messages can be sent directly to mums, dads and carers - even grandparents!

Registering with the new ParentMail is very easy! Within the next 14 days you will be sent either an email and/or text message from ParentMail, when you receive this please just follow the instructions in the message. Once registered, if you have an Android or Apple smartphone, we would highly recommend you download the ParentMail App for the best user experience. To do this, simply search for "ParentMail" in your App store. Please be assured that ParentMail is registered with the Information Commissioner and guarantees that all information you provide will be kept private and will not be passed on to any other organisation.

If you need any additional information or assistance, please visit the help site:

[www.parentmail.co.uk/help/parenthelp/](http://www.parentmail.co.uk/help/parenthelp/) or if you have not received any contact from ParentMail within 14 days please contact Mrs Chambers in the school office.

Yours sincerely,

Helen Stokes



## Waterthorpe NI School Behaviour Plan



Dear Parents/Carers,



At Waterthorpe we have a positive school Behaviour Plan. At the beginning of term we work with the children in assemblies, the classroom and the playground teaching and re-visiting our rules. This involves teaching the routines which help the children to be members of a safe and happy school.

We focus on our whole school rules and playground rules in assemblies and the classroom. We believe that these rules teach important morals, which will help the children to become valued members of their community. These rules are on display around school.

We have a strategy for helping children to keep these rules. This strategy is based upon positive reinforcement and all adults in school will give children praise for following our rules. When children fail to follow the rules we will use our skills and expertise to guide them towards improved behaviour. For example if a child is chattering during listening time we might praise another child for sitting and listening, giving them a sticker and telling the class why they are getting it.

There are times when, despite using a range of positive strategies, children continue to misbehave. When this happens we have a procedure to follow. We will start each session of the day afresh unless a child persistently gets to the point where their name is recorded by the end of a session. If this happens we will move up the consequences and they may go straight to 'time out'.

Consequences for misbehaviour:

1. We will remind the child of the rule linked to their behaviour e.g. "We listen to the grown-up and do as they ask."
2. If the behaviour continues the child will be given a warning and their name will go on the class 'cloud'
3. If the behaviour still continues their name go on the 'rain cloud' and they will be given another warning.
4. If the behaviour continues further then the child will miss their afternoon playtime that day (or the next if the behaviour occurs after last playtime) and they will spend the time with a

member of staff talking about what they have done and how they can improve. A note will be sent home to tell you why they have missed their playtime.

This will mean that they do not get their ice-pop at Friday afternoon Reward time

Further consequences include:

- 'Time out' away from the other children in their own classroom
- 'Time out' in another classroom
- Being sent to the Headteacher
- Being put on a behaviour report where they have to see a senior member of staff at intervals throughout the day to check on their behaviour

If children seriously misbehave e.g. they deliberately hurt another child without provocation or they are confrontational with an adult in school they will immediately move to the stage 4 sanction and will miss a playtime and their Friday ice-pop.

Where there is no improvement or where a serious incident has occurred the school may follow exclusion procedures.

In the playground 'time out' will consist of holding the adult's hand. Staff on duty will report, to the classteacher, the names of children who ignore the rules after a reminder and a warning and the same sanctions as in class will apply.

On Friday afternoons all children who have behaved well in the playground and the classroom will be able to purchase an ice-pop or raisins from the School Council for 10p. The School Council spend the money that they raise on toys and games for the playground.

All children who behave well in class will have their names on the sunshine. If they are especially good then they may become 'superstars'. Each week the teacher chooses someone who has tried really hard to be the 'Star of the Week' and to get their award in assembly. Other children may be in the Merit book, on Friday in assembly, for good behaviour.

Please support us in helping children to stay safe and be well behaved in school. It is important that children follow the playground rules when they are in your care in the playground at the beginning and end of the school day. Please remind your child if they go in an area or do something that does not follow the school rules e.g. going into the vegetable garden, swinging round the railings or getting the outdoor toys out. This will help them to understand how to follow the rules in school and will help to keep everyone safe and happy.

Thank you.

# Waterthorpe Nursery Infant School

## Behaviour Plan



### School Rules

In our school we will always:

- Listen to the grown up and do as they ask
- Be in the right place at the right time
- Look after our things and each other
- Always try our best
- Take turns and share

### Playground Rules

In our playground, before and after school and at playtimes, we will:

- Remember our school rules
- Ask if we need to go to the toilet or the medical room
- Remember to play safely and stay away from:
  - the bank and trees
  - the vegetable garden and path
  - the bike pods
  - the railings and gates
  - the windows

When the whistle goes we will:

- Stand still and look at the adult
- Walk to our line when the card is held up.
- Stand quietly in our line